

# Steering Committee Meeting 4 Jefferson- St. Lawrence **CLEAR**

Coastal Lakeshore Economy and Resiliency  
Initiative

July 28, 2021

# Agenda

---

- Status of Process & Deliverables
- Public Workshop Highlights
- Community Profiles
- Asset Inventory
- Vision for a Resilient Future
- Homework and Next Steps

July 28, 2021

**CLEAR** Steering Committee Meeting

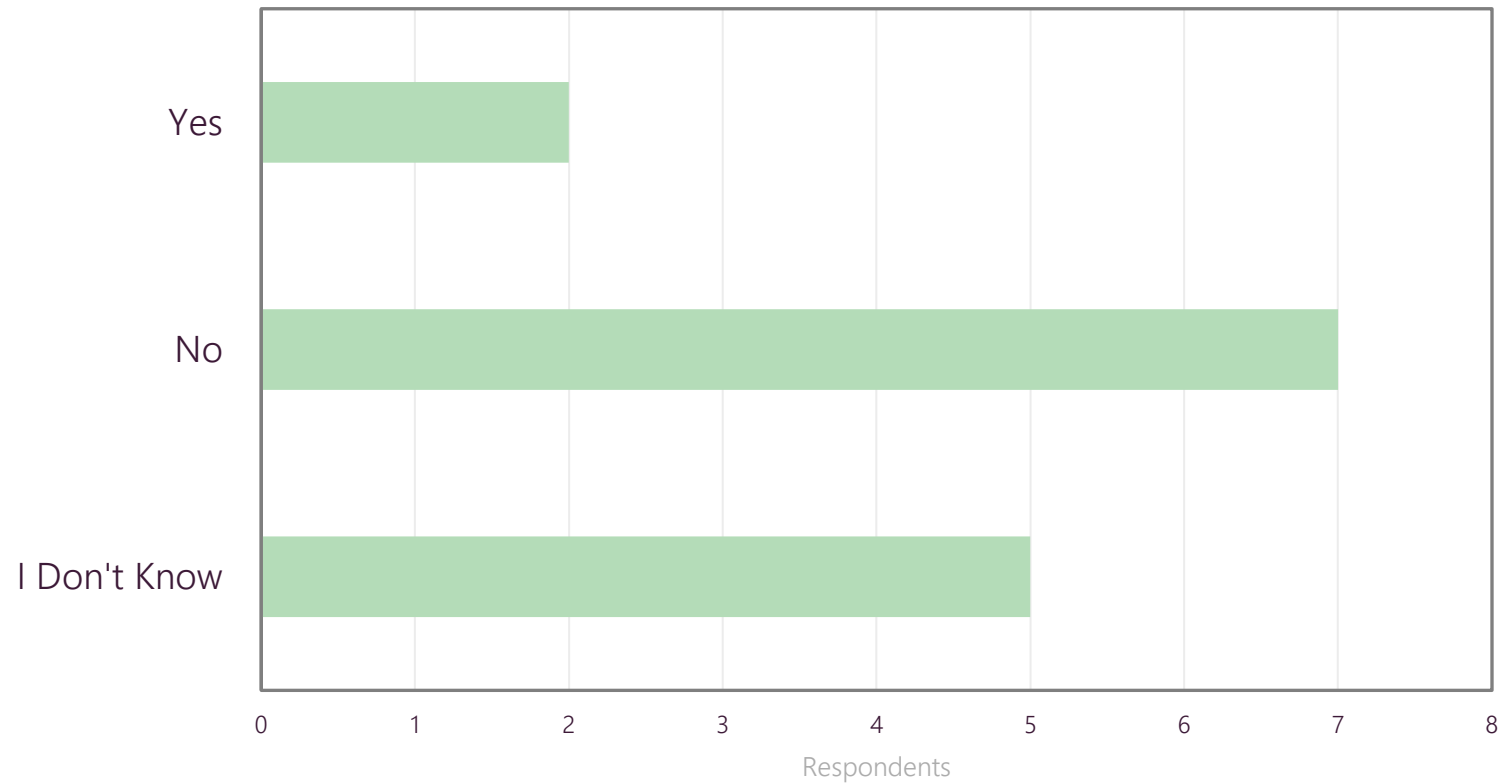


# CLEAR Deliverables

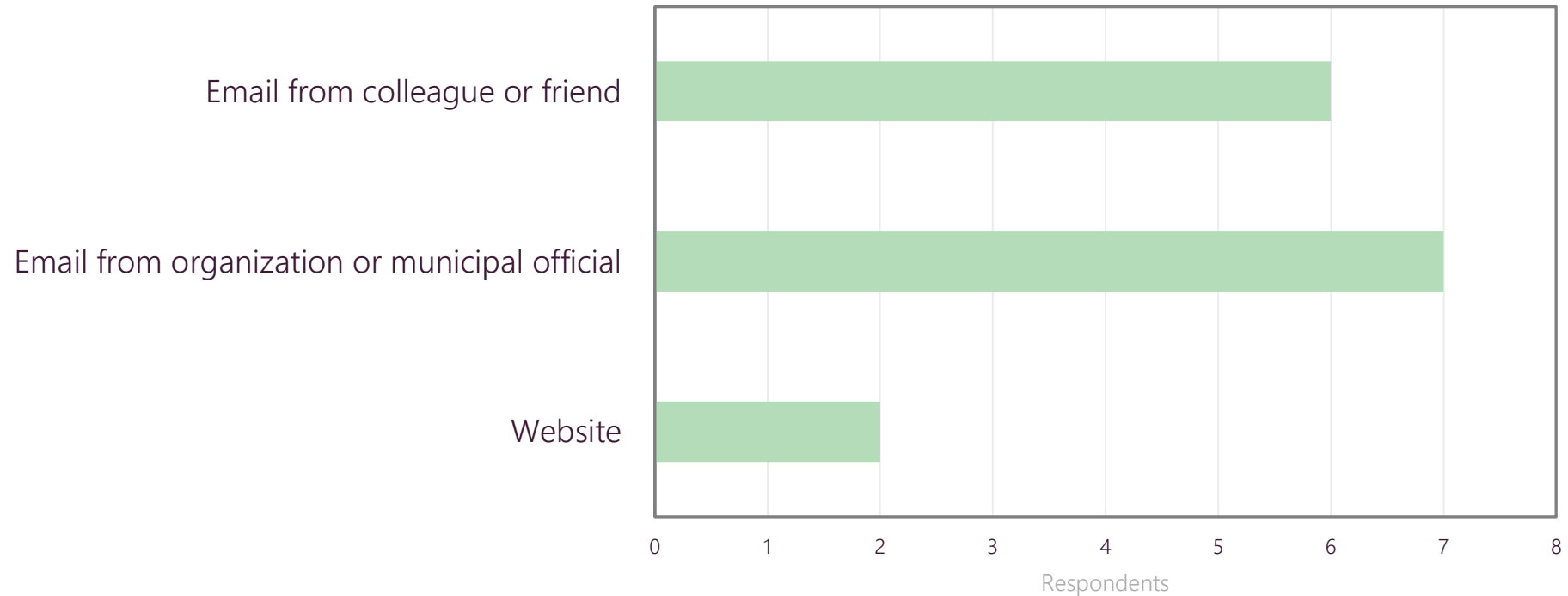
- Steering Committee coordination
- Community engagement
- CLEAR plan
  - Community Profiles
  - Asset Inventory
  - Risk Assessment
  - Vision Statement
  - Needs/Opportunities Assessment
  - Long-term Strategies, Projects, Programs, Actions



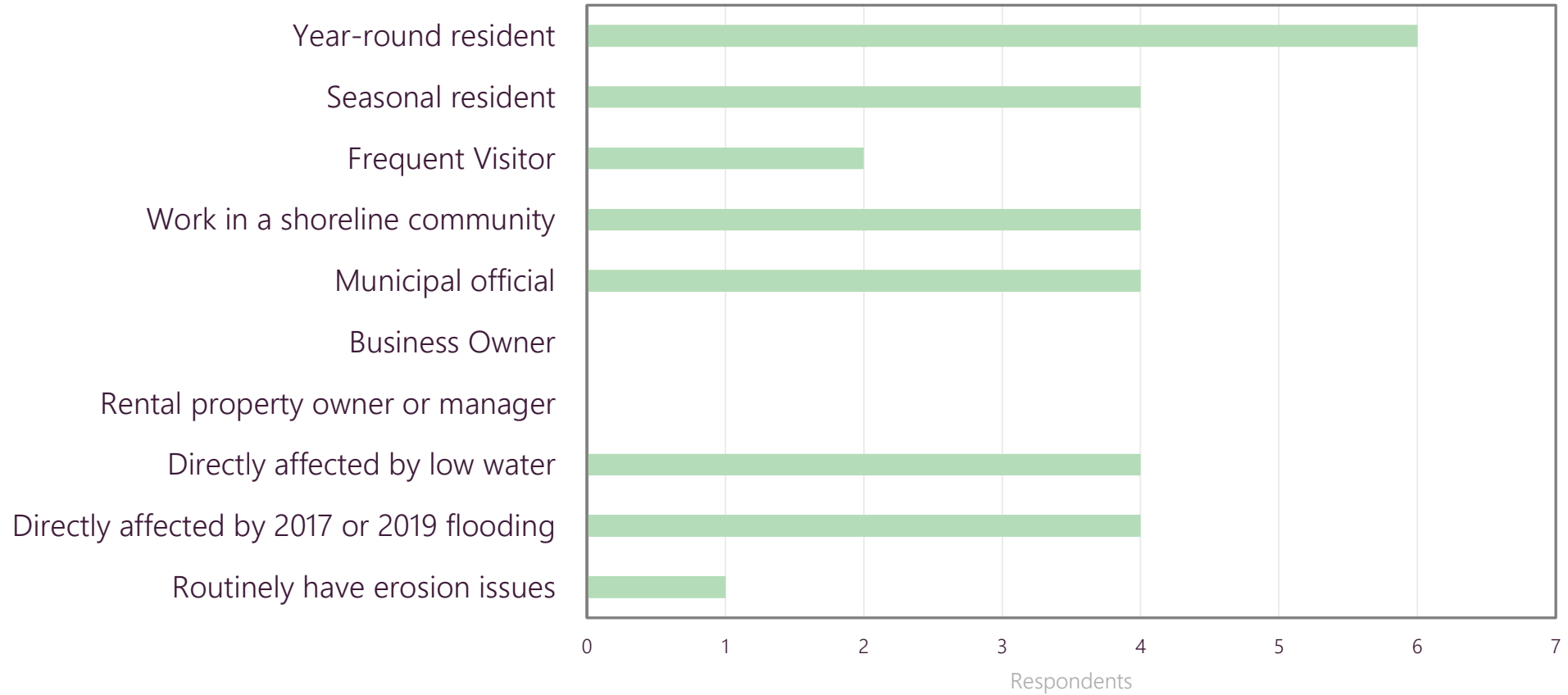
# Is your community prepared to withstand and recover from extreme water levels?



# How Did You Hear About This Meeting?



# Tell Us About Yourself.



# Public Workshop Highlights

## Introduction to CLEAR

- Goals, process, deliverables, timeline, and responsibilities

## Interactive group activity

- Elaborated on their community's risk, vulnerability, and exposure
- Notes are posted on the website

## Discussion comments

- Need for education on factors affecting water levels
- Enlist local, trusted voices as sources of information
- Unique ecosystem requires careful stewardship

# Progress Update: Community Profile

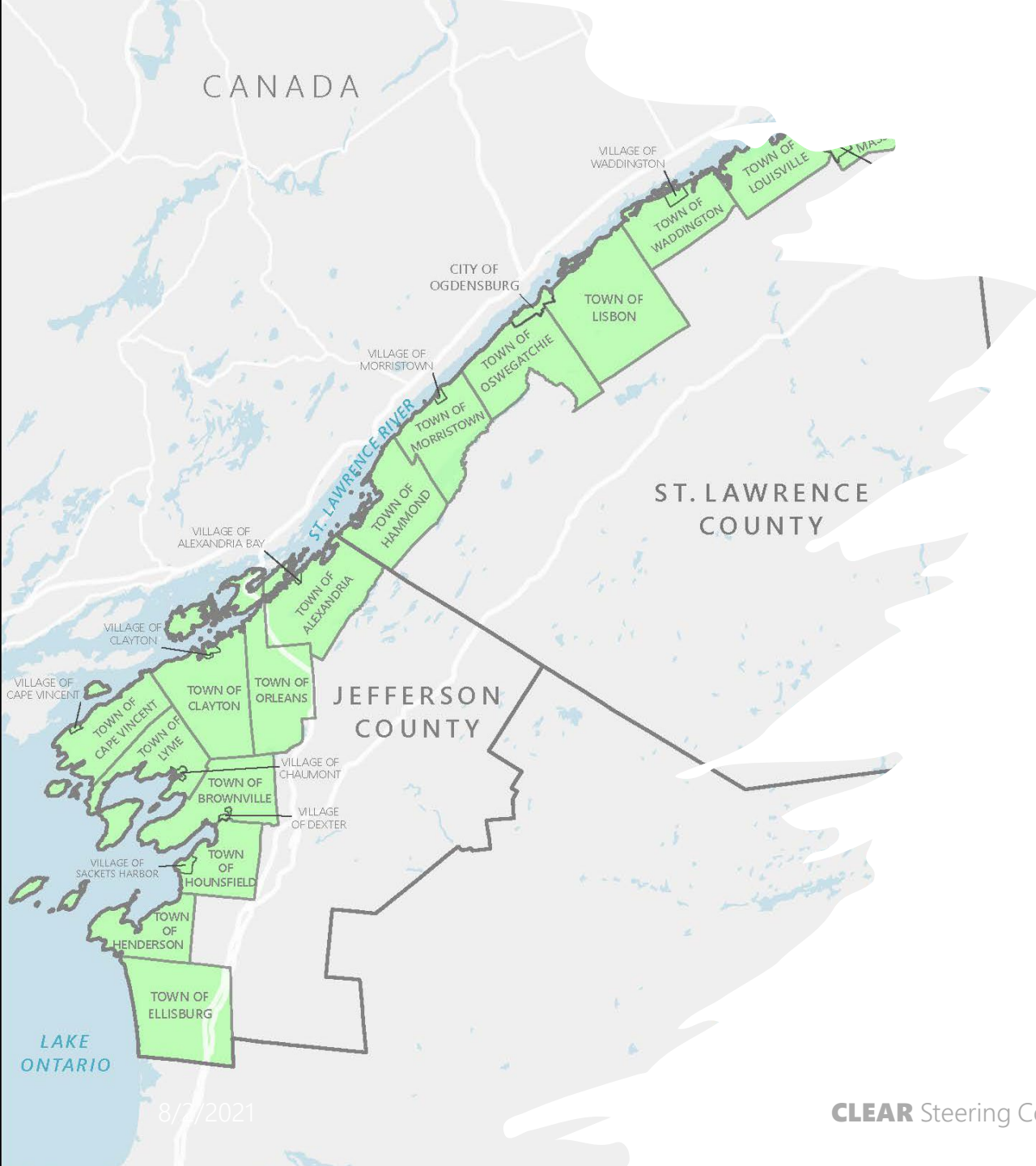
---

The Community Profile provides a foundation of data to guide resiliency planning in the Jefferson St. Lawrence region.

By evaluating current conditions and identifying recent trends, this profile will provide an overview of vulnerable infrastructure and coastal hazards and risks, both today and in the future.

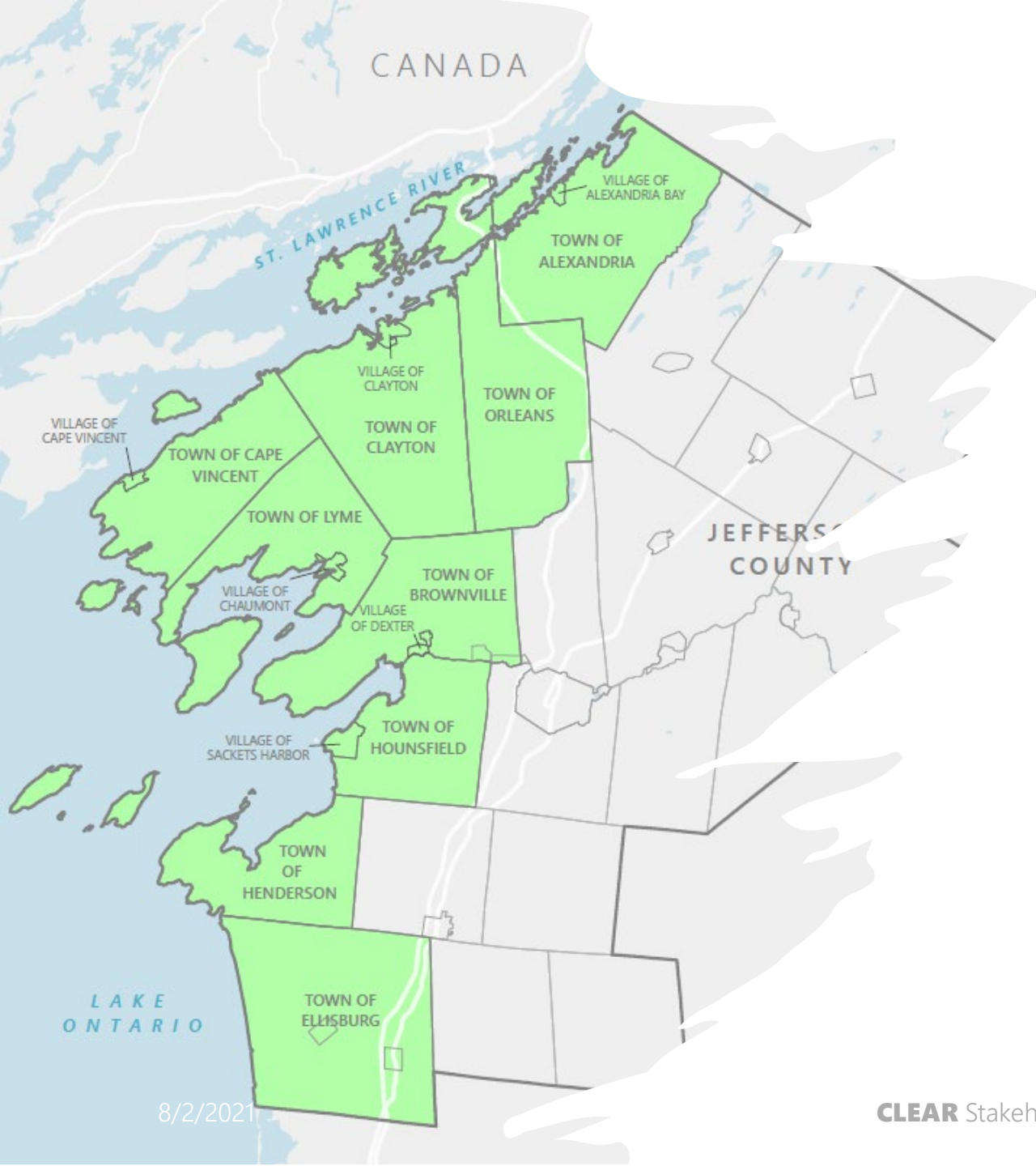






# North Country CLEAR

The Jefferson - St. Lawrence region contains 680 miles of shoreline along both Lake Ontario and the St. Lawrence River.



# Jefferson County

---

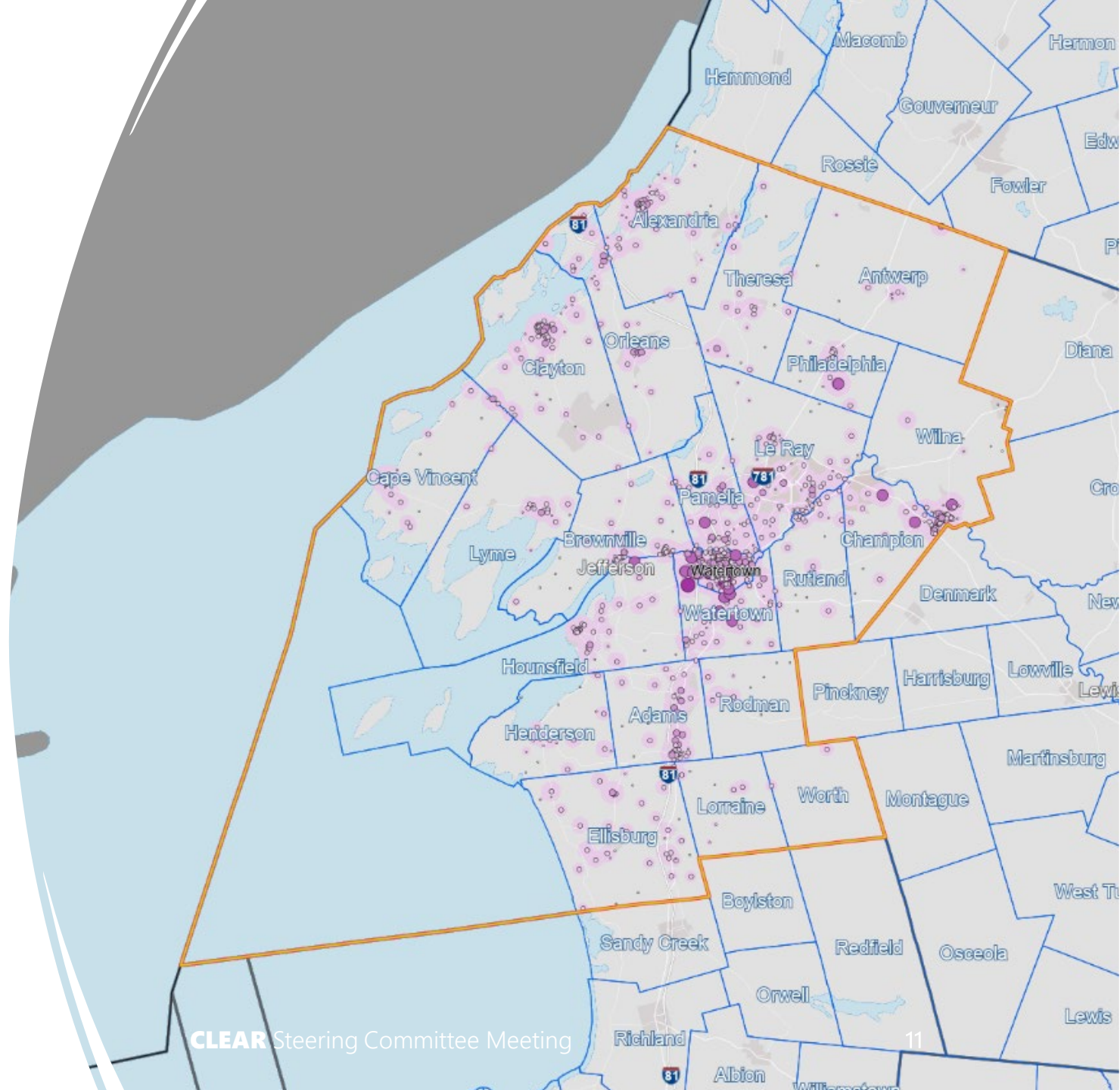
Municipalities in the CLEAR study area comprise 34% of the county's population and 49% of the land within the county.

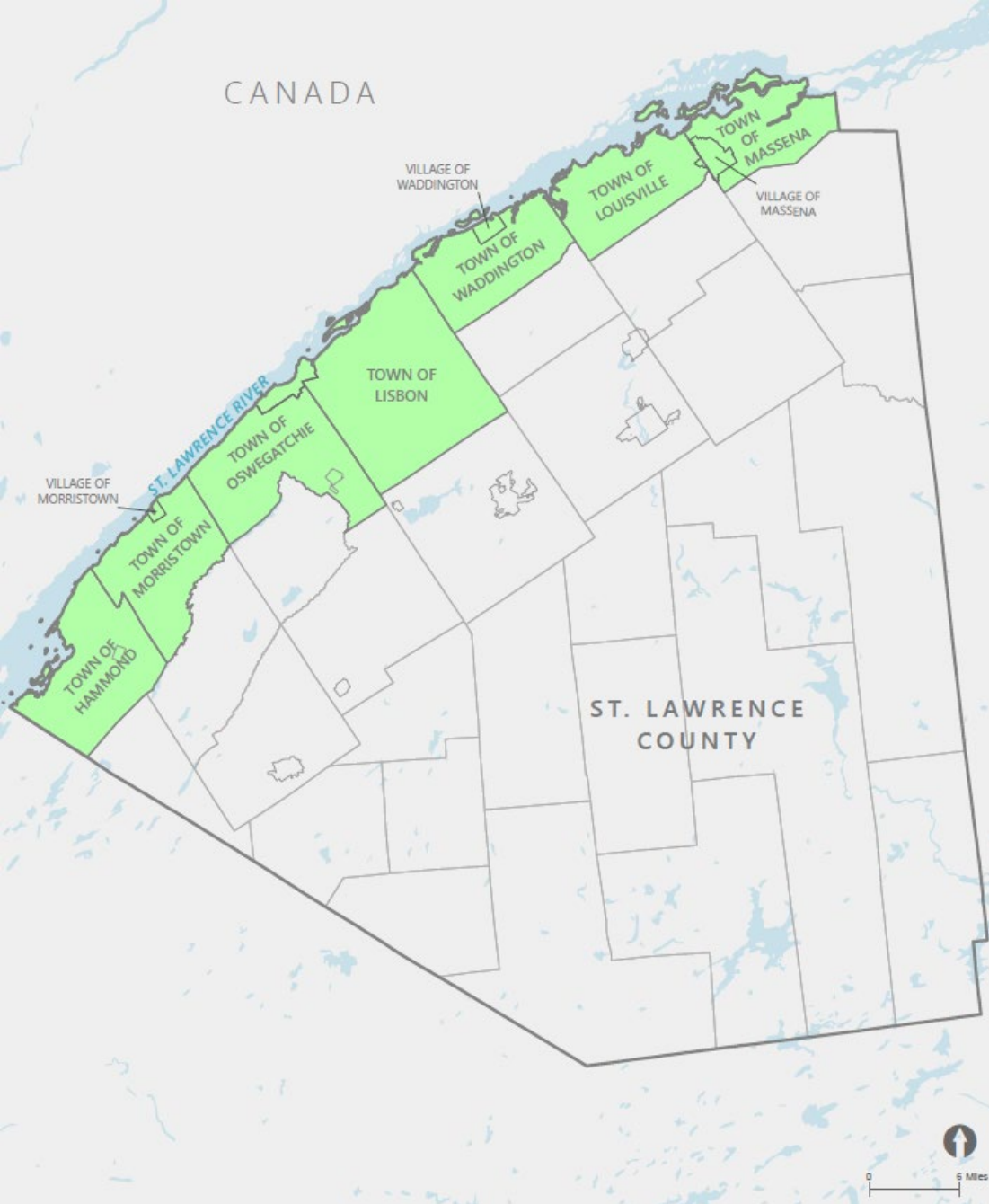
---

62% of the total assessed value of parcels in the county are located in a risk area.

# Jefferson County

Over a quarter (26%) of the County's jobs are within the CLEAR Study Area shoreline communities.





# St. Lawrence County

---

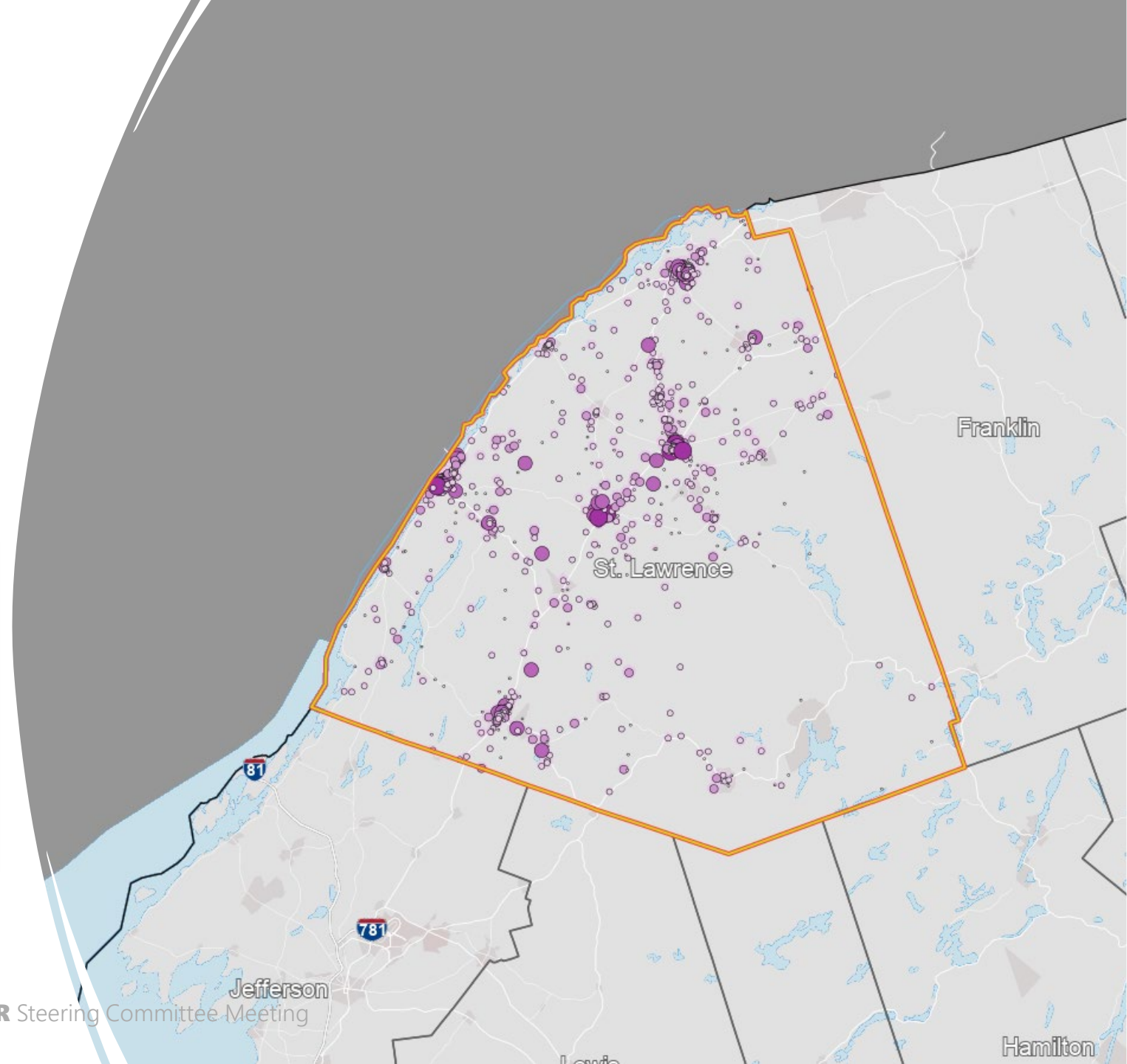
Municipalities in the CLEAR study area comprise 46% of the county's population and 18% of the land within the county.

---

56% of the total assessed value of parcels in the county are located in a risk area.

# St. Lawrence County

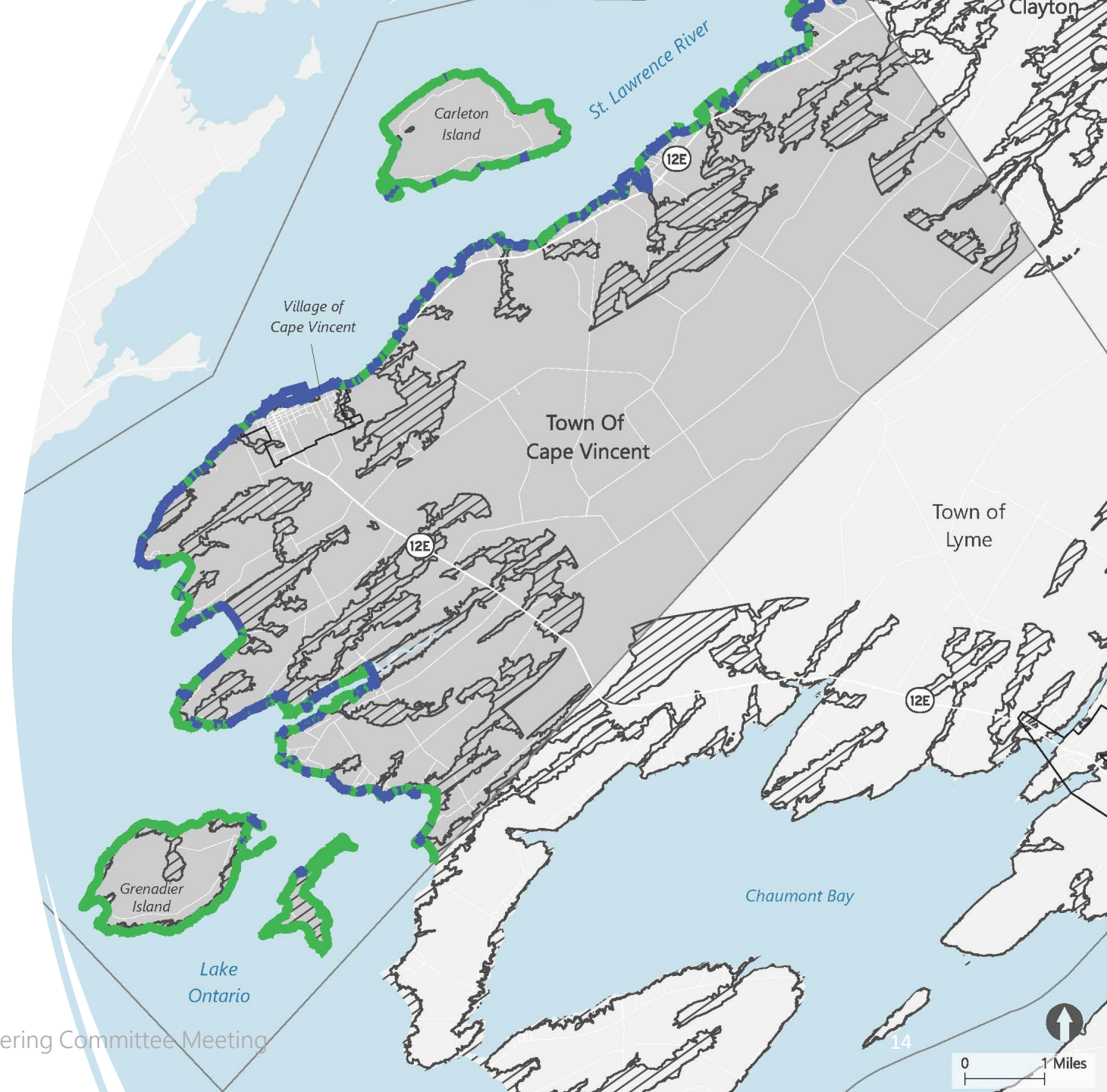
Nearly half (46%) of the County's jobs are within the CLEAR Study Area shoreline communities.



# Example of Municipal Level Data

## *Town of Cape Vincent*

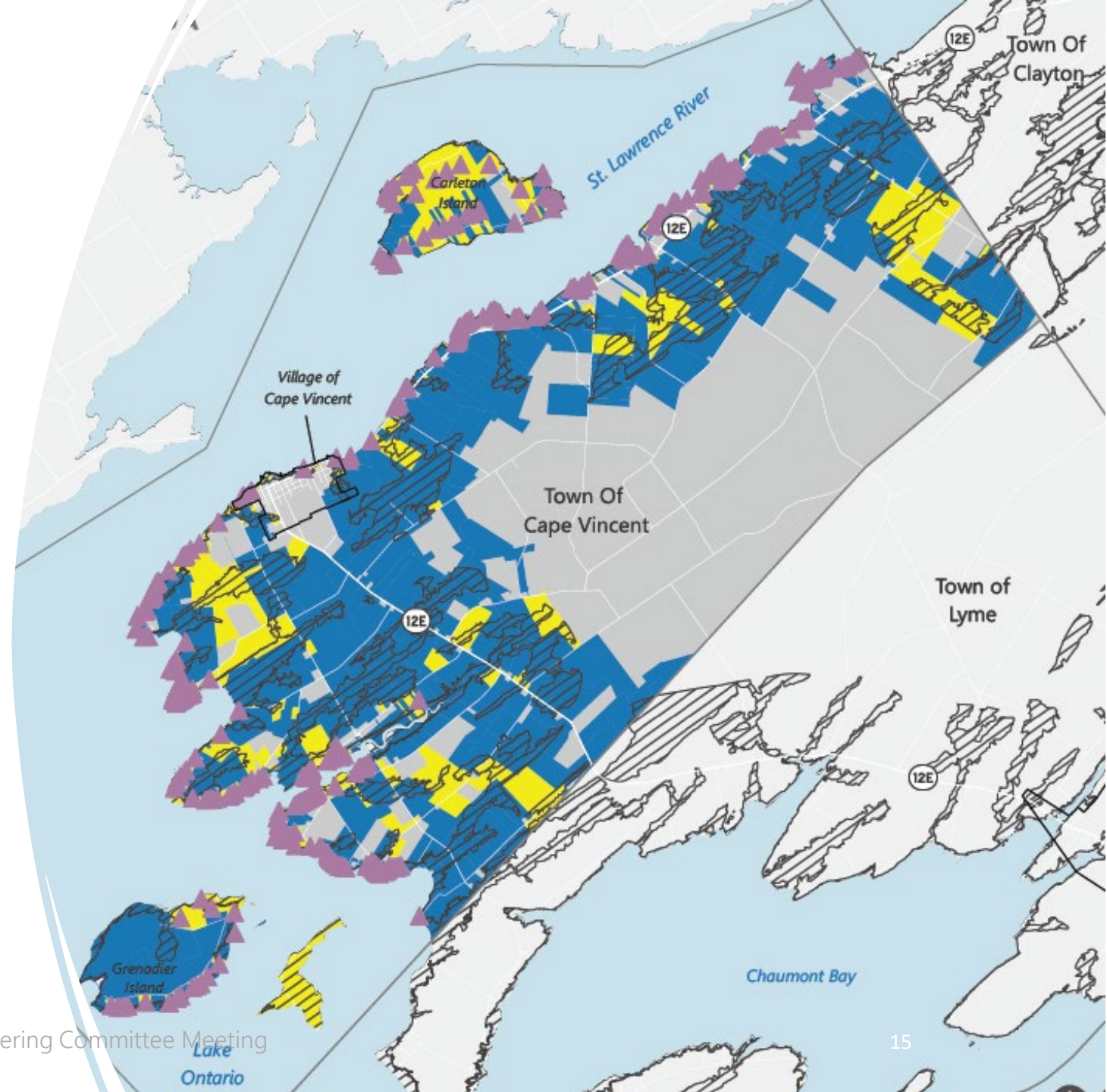
57 miles of shoreline along Lake Ontario and the St. Lawrence River



# Example of Municipal Level Data *Town of Cape Vincent*

58% of parcels located within the Risk Area.

Many are seasonal residences.



# Example of Municipal Level Data

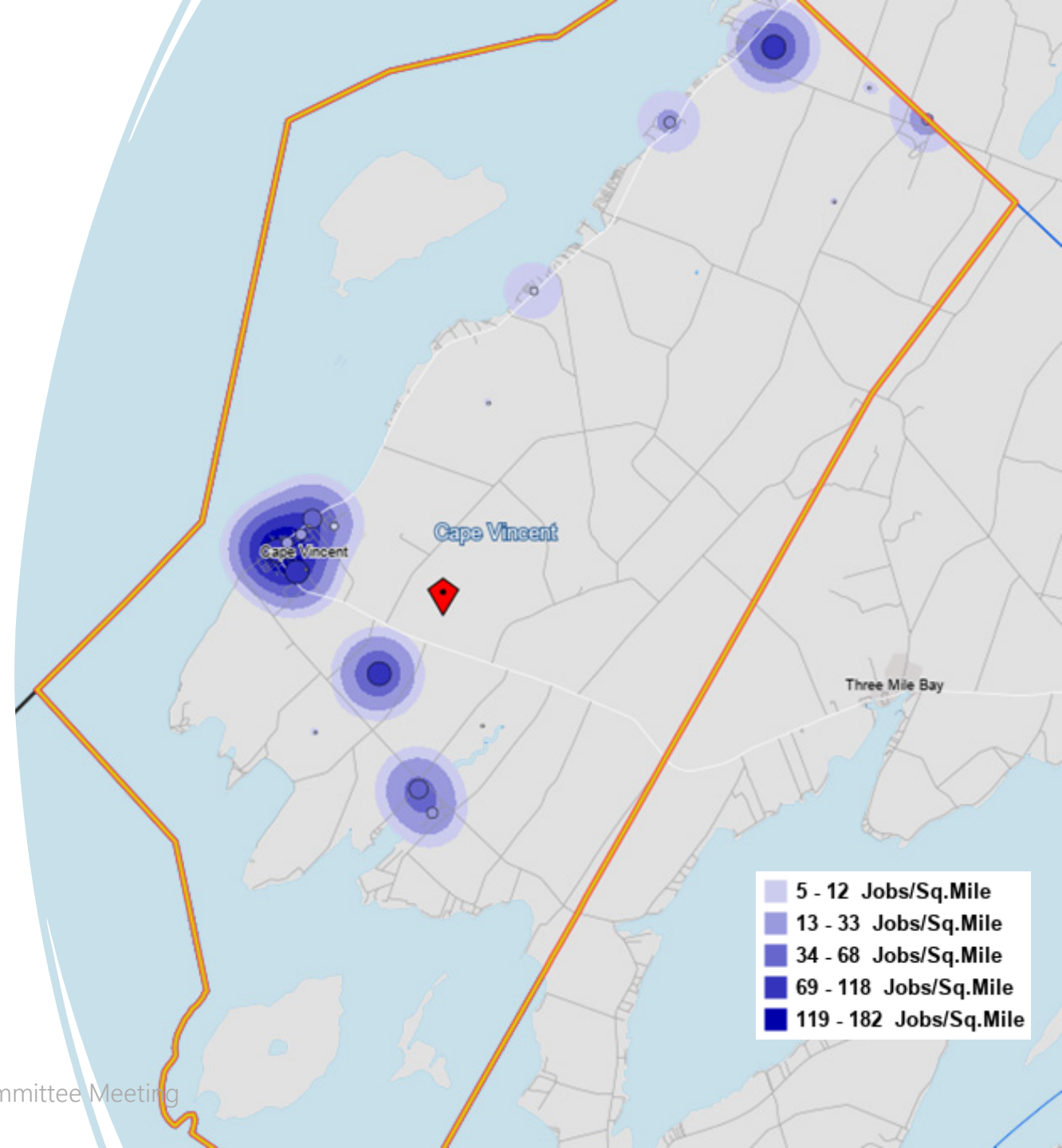
## *Town of Cape Vincent*

Five of seven employment centers located close to the shoreline

Slight population decline since 2000

Large number of seasonal residents

30% of homeowners with a mortgage are housing-cost burdened





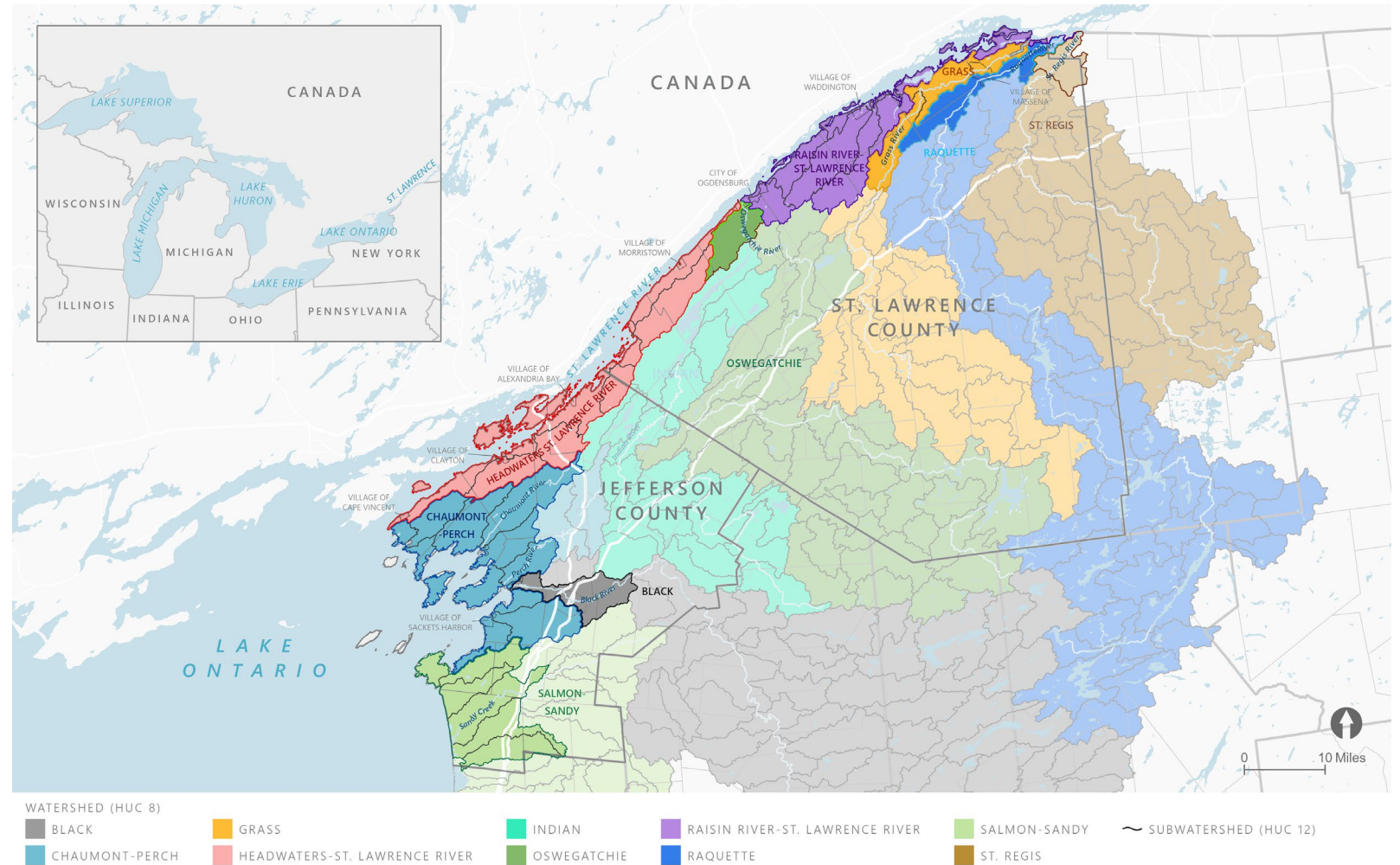
# Regional Characterization

## Watersheds and the Coastal Environment

Environmental Conditions

Water Level Changes and Use Impacts

Emerging Concerns



CLEAR Steering Committee Meeting

# Regional Characterization

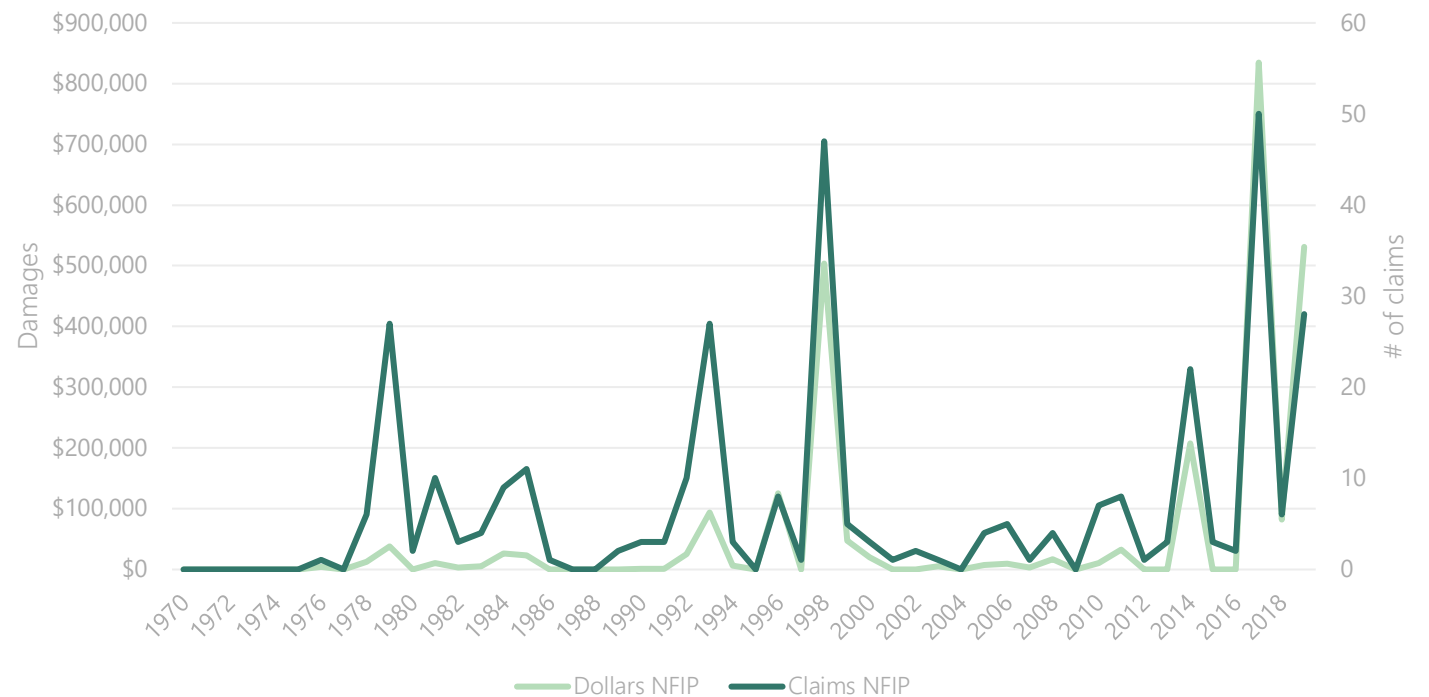
## Flooding

Storm & disaster events

Damages & claims

2017 Coastal Flooding Survey Photos

National Flood Insurance Policy Claims and Damages in Dollars Per Year for Jefferson-St. Lawrence Region



Source: Natural Resource Defense Council. Flood Data Visualization Tool. Available at: <https://www.nrdc.org/resources/losing-ground-flood-visualization-tool> (Accessed April 2021).

# Regional Characterization

# Climate Impact

## Extreme Event Projections Region 6 - Jefferson County

	2020s			2050s			2080s		
	Low Estimate (10th Percentile)	Middle Range (25th to 75th Percentile)	High Estimate (90th Percentile)	Low Estimate (10th Percentile)	Middle Range (25th to 75th Percentile)	High Estimate (90th Percentile)	Low Estimate (10th Percentile)	Middle Range (25th to 75th Percentile)	High Estimate (90th Percentile)
Days over 90°F (3 days)	5	6 to 8	10	9	12 to 21	26	12	17 to 44	57
# of Heat Waves (0.2 heat waves)	0.6	.8 to 0.9	1	1	1 to 3	3	1	2 to 6	7
Duration of Heat Waves (4 days)	3	4 to 4	4	4	4 to 4	5	4	4 to 6	6
Days below 32°F (147 days)	116	119 to 126	116	96	102 to 113	119	78	85 to 104	114
Days over 1" Rainfall (6 days)	6	7 to 8	6	7	7 to 8	9	7	7 to 9	10

## Extreme Event Projections Region 7 - St. Lawrence County

	2020s			2050s			2080s		
	Low Estimate (10th Percentile)	Middle Range (25th to 75th Percentile)	High Estimate (90th Percentile)	Low Estimate (10th Percentile)	Middle Range (25th to 75th Percentile)	High Estimate (90th Percentile)	Low Estimate (10th Percentile)	Middle Range (25th to 75th Percentile)	High Estimate (90th Percentile)
Days over 90°F (0.3 days)	0.5	0.8 to 2	2	2	3 to 6	10	3	5 to 19	27
# of Heat Waves (0 heat waves)	0	.1 to 0.2	.2	0.2	0.3 to 0.7	1	0.2	0.5 to 2	3
Duration of Heat Waves (3 days)	3	3 to 4	4	3	3 to 4	4	4	4 to 5	5
Days below 32°F (193 days)	159	162 to 176	177	131	138 to 154	161	107	118 to 143	156
Days over 1" Rainfall (7 days)	6	7 to 8	9	7	8 to 9	10	8	8 to 10	11

# Regional Characterization

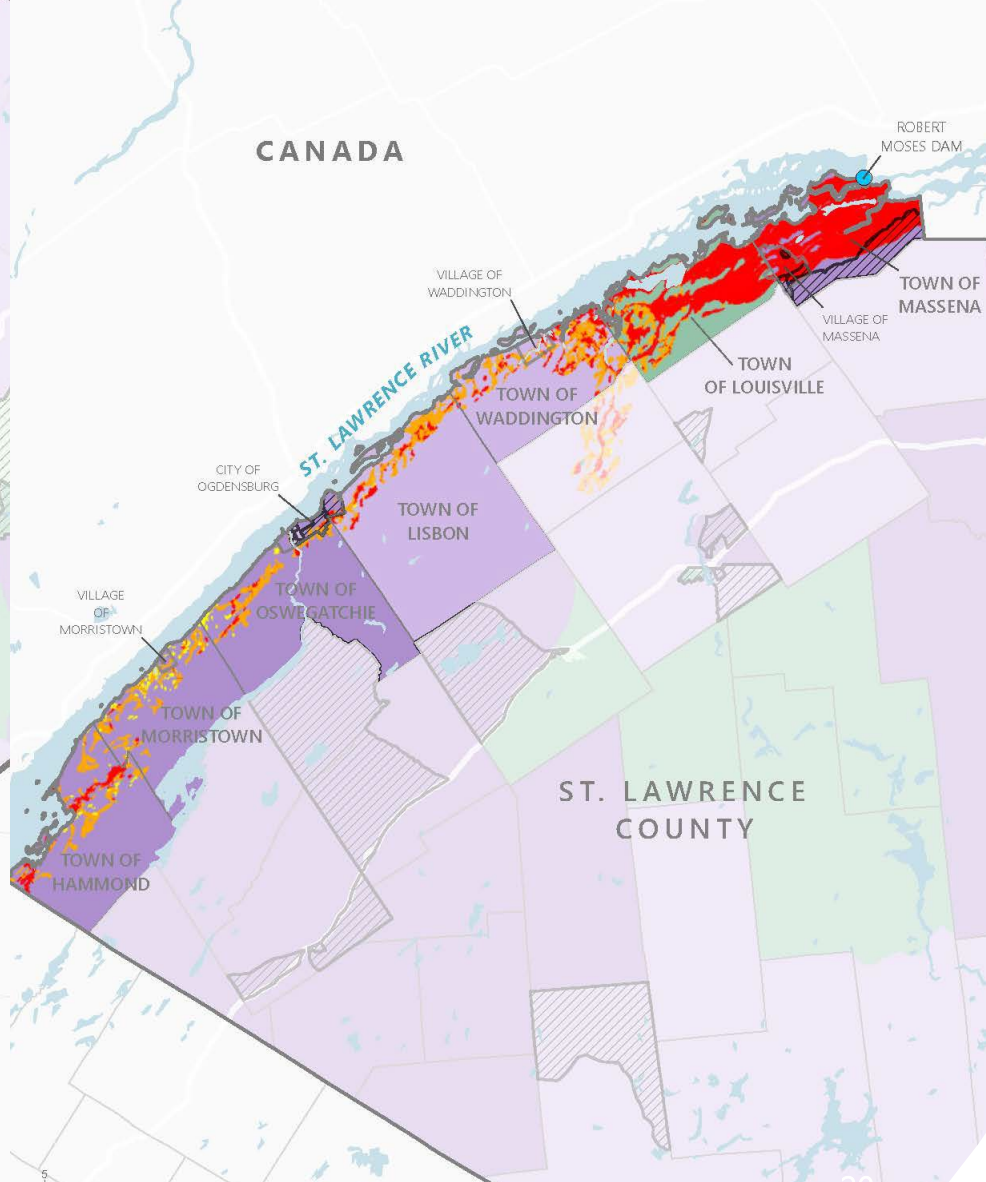
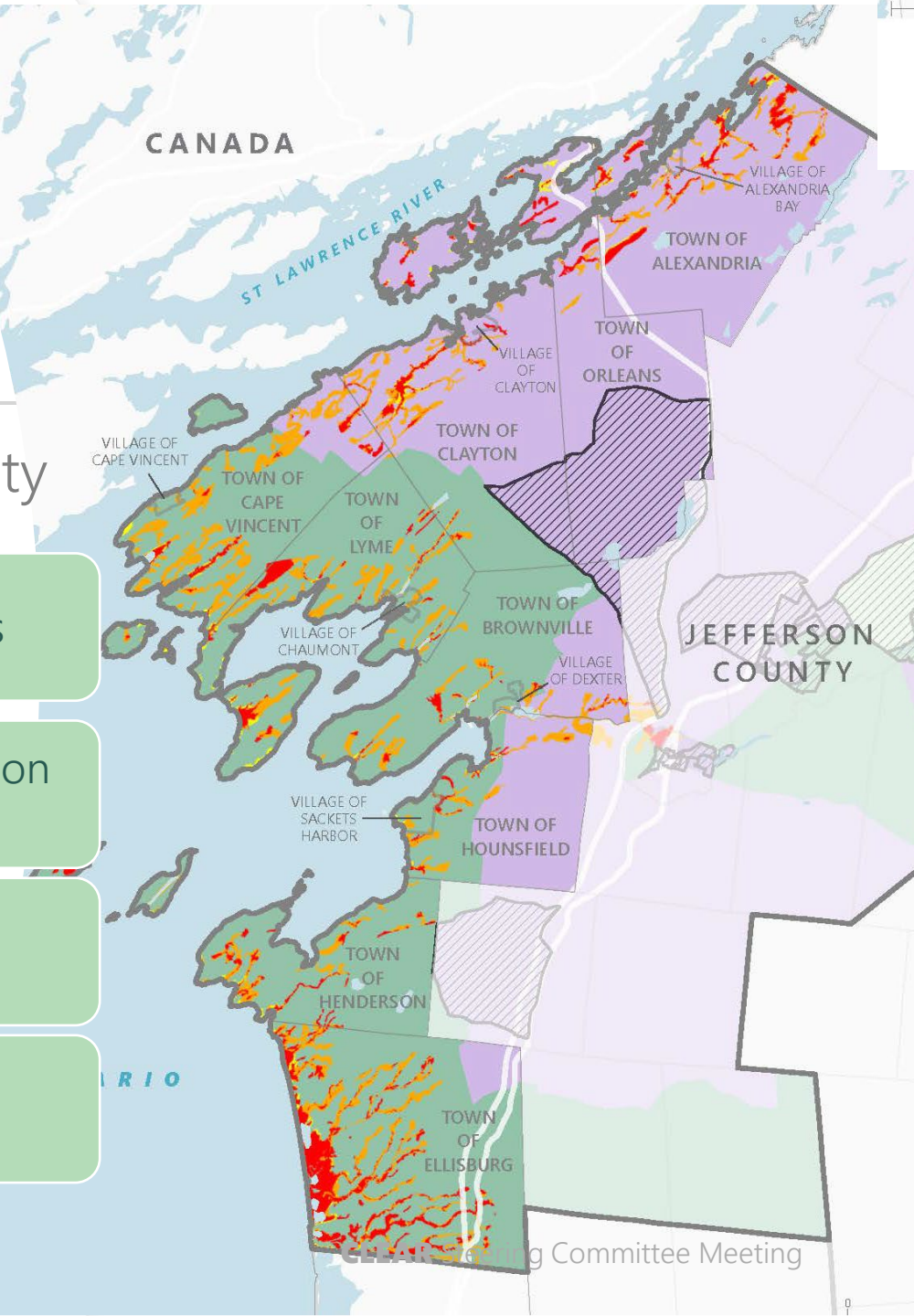
## Social Vulnerability

Socioeconomic Status

Household Composition & Disability

Housing Type & Transportation

Minority Status & Language



# Regional Characterization

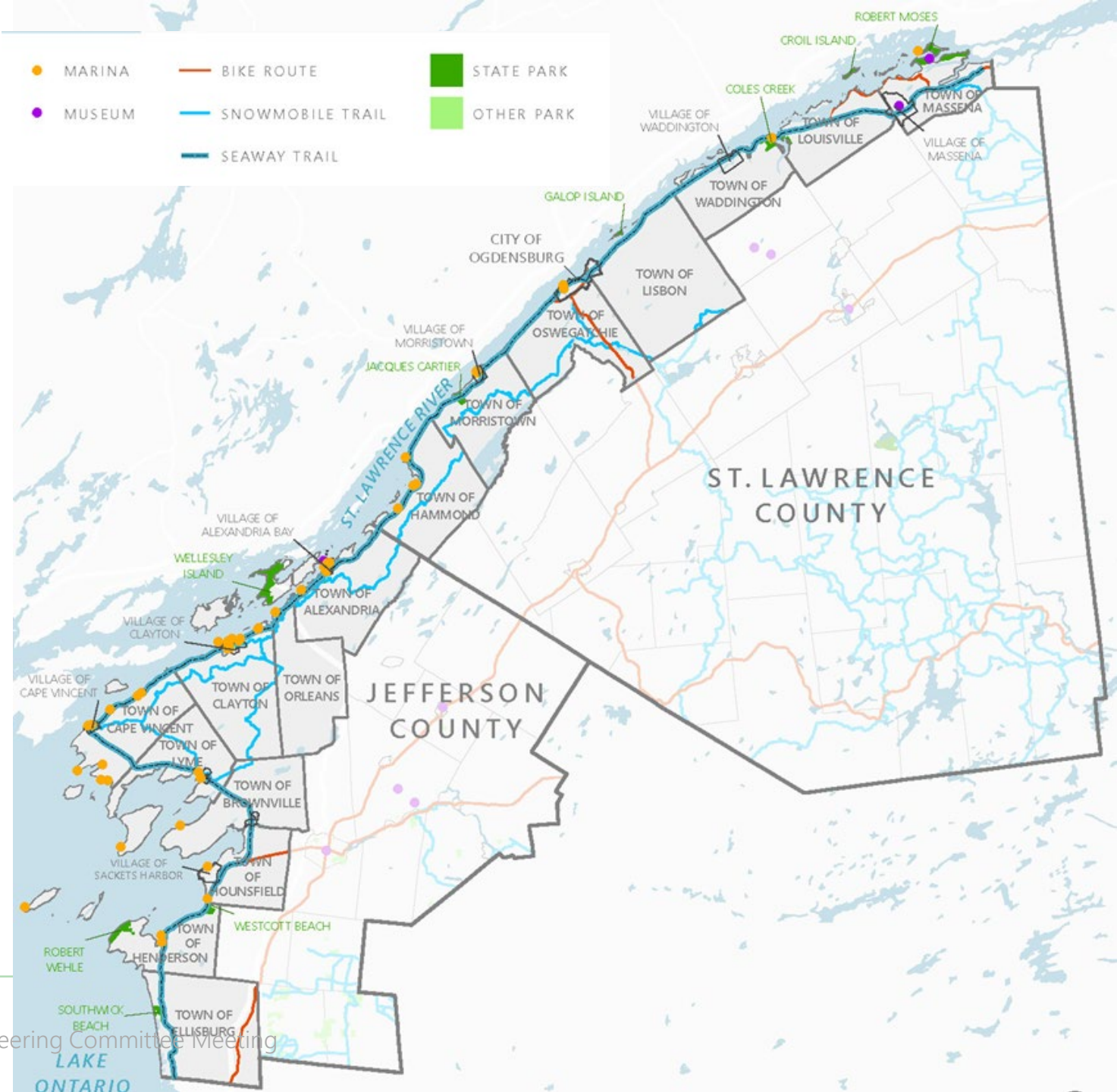
## Tourism & Recreation

Parks (State and other)

Trails (hiking, bike, snowmobile)

Marinas, restaurants, cottages/RV parks

Nature areas, camping, fishing licenses



# Regional Characterization

## Regional Stressors

Loss of manufacturing

Aging and deteriorating infrastructure

Population Decline

Lack of broadband

Lack of agricultural processing

Ecological imbalance



# Asset Inventory: Jefferson-St. Lawrence

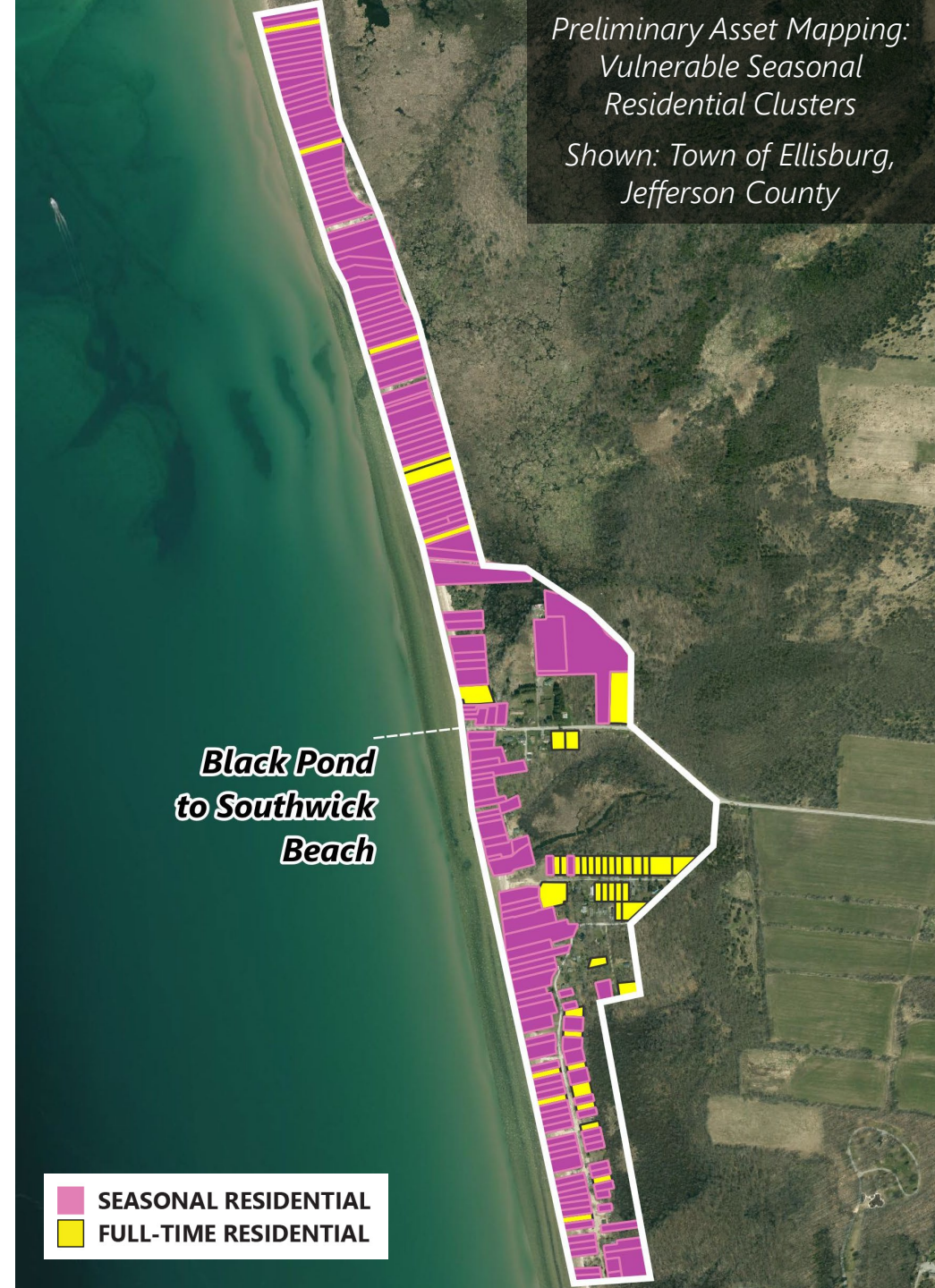
---

## Overall Goal:

Create a "living inventory" that draws from multiple planning initiatives and local sources

## General Asset Classifications:

- Economic
- Health and Social Services
- Housing
- Infrastructure Systems
- Natural and Cultural Resources



# Asset Inventory: Jefferson-St. Lawrence

## Critical sources for the CLEAR initiative:

- Steering Committee input
- Look & Listen Tour feedback
- Public Workshop feedback
- Focus group sessions
- Review of local and regional planning documents

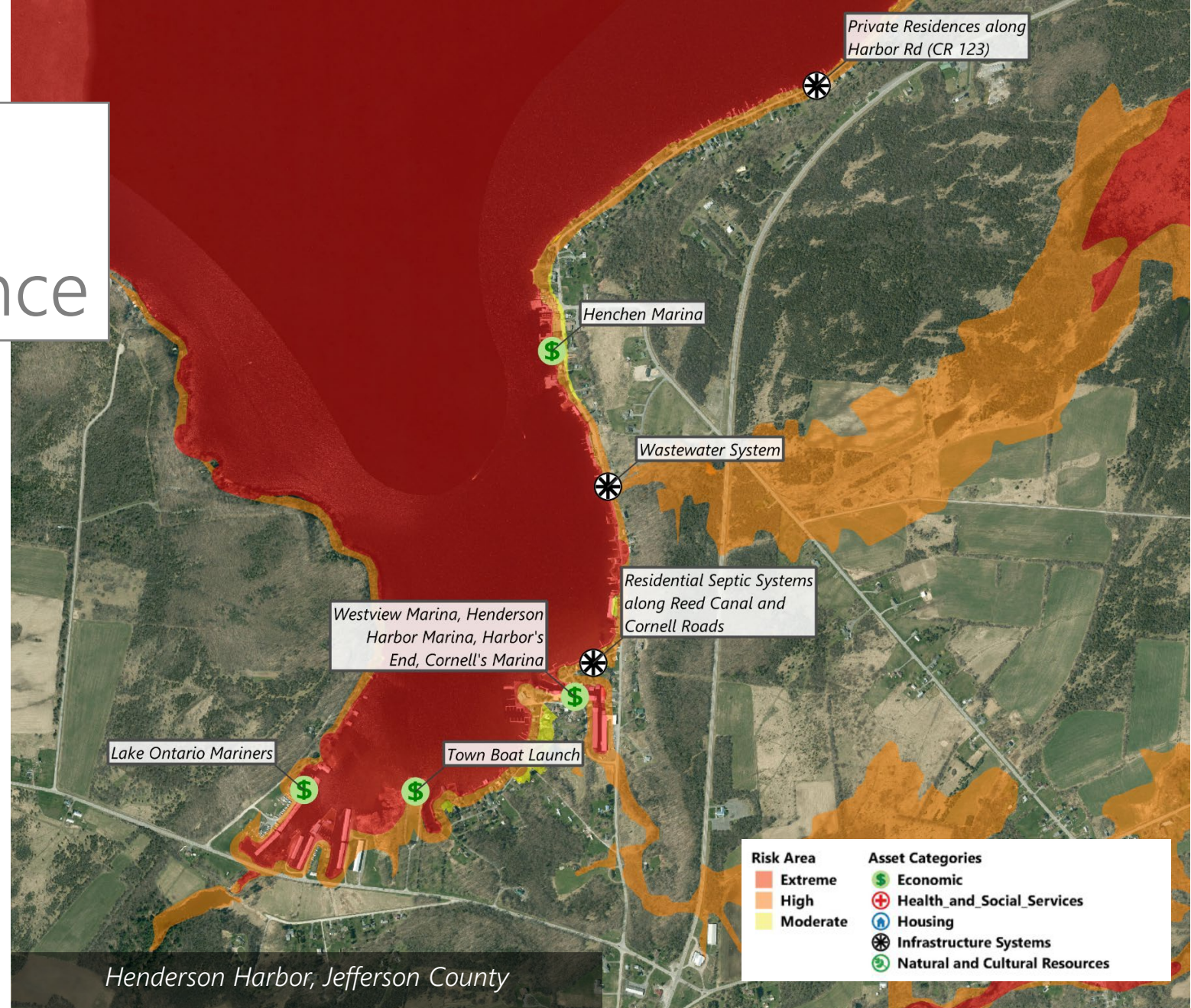




# Asset Inventory: Jefferson-St. Lawrence

## Expanded asset information advanced through CLEAR:

- REDI Projects/Asset Inventory
- Natural Protective Features
- Residential Clusters
- Critical Facilities
- Locally-Designated Significant Facilities
- Funded Projects
- Proposed Projects



# Resiliency is...

...the capacity for a community and its ecosystem to withstand extreme events and other forces or risks; quickly recover the interconnected social, economic, and ecological systems' structure and function in the aftermath of a disaster; and develop ongoing adaptability to rapidly changing environmental conditions and forces. *(NYS CMP, 2016)*

# Guiding Themes to Achieve the Vision:

- Improve our collective **understanding and communication** of coastal processes and impacts of climate change on Lake Ontario [and the St. Lawrence River]
- Protect **public health and safety** including the most vulnerable members of our communities
- Protect and maintain the **unique natural systems** across our shoreline region
- Guide land use decisions and remedial measures with an understanding of **dynamic shoreline and coastal processes**
- Enable our region to continue as an attractive destination **for water-based recreation and cultural events**
- Protect community investment in **wastewater and water infrastructure**
- Protect public and private investments in the **built environment**
- Ensure a **sustainable future** for generations to come

# Vision Statement

The region has implemented effective strategies to maintain the vibrancy of our shoreline communities while protecting the ecosystem services and functions that sustain us all. The strategies reflect a shared commitment among individuals, communities, and regional/state partners to prepare for and respond to fluctuating water levels in Lake Ontario and the St. Lawrence River.

# Homework

- Community profile – expect week of August 9th  
Submit feedback by August 18  
Use comment feature of PDF
- Promote CLEAR and Public Workshop #2  
Public Speaker Program and Materials

# Next Steps Jefferson-St. Lawrence

Stakeholder Focus Groups: August - September

SC Meeting #5: **August 25, 10:00-11:00 AM**

Public Workshop #2: **September 21, 6:00 PM-7:30 PM**

[northcountryclear.com](http://northcountryclear.com)